

# Ashcombe Court

17 Milton Rd,  
Weston-super-Mare,  
Somerset, BS23 2SJ



[accomplish-group.co.uk](http://accomplish-group.co.uk)  
0121 779 5541

**accomplish.**  
make every day amazing

# About Us

Ashcombe Court is a residential service dedicated to supporting individuals with Mental Health Needs, Acquired Brain Injuries, Learning Disabilities, and Autism. Our team of professionals is extensively trained to cater to the specific needs of each individual, guiding their progress towards leading fulfilling lives.

As a residential service, our aim is to bring structure into the lives of the individuals we support, fostering independence through tailored solutions and integration within the local community. We uphold a person-centred approach, recognising and nurturing the unique strengths and aspirations of each individual we support.

## Our Approach

Ashcombe Court adopts the holistic Recovery Model, complemented by close collaboration with our Positive Behaviour Support Team. This ensures a comprehensive and person-centred approach to each individual's care.

To facilitate this approach, we establish weekly diaries for each individual, serving as a guiding framework predominantly for personal appointments. However, we prioritise daily guidance from each individual regarding tasks or activities they wish to engage in. This allows us to tailor our support according to their preferences and needs, fostering a more personalised and fulfilling experience.

## Accommodation

Ashcombe Court features 8 bedrooms, each with its own ensuite for the comfort and privacy of the individuals we support. Conveniently, two wheelchair-accessible rooms are situated on the ground floor to ensure accessibility.

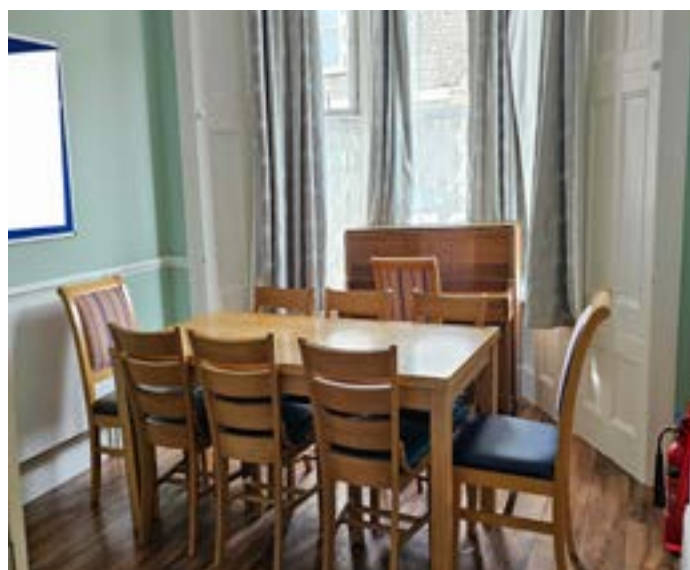
The service includes a spacious lounge area with a view of the front of the building, providing a welcoming and comfortable space. Additionally, a dedicated dining room equipped with facilities allows individuals to prepare drinks and simple snacks. Moreover, our kitchen area enables staff to support residents in preparing their own meals, promoting independence and choice in their daily routines.

For outdoor relaxation, there's a small decking area at the back of the home. In the future, we have plans to introduce planters and pagodas, enhancing the outdoor experience and providing a serene environment for the individuals we support at the front of the home.

# Location

Ashcombe Court, nestled in Weston-Super-Mare, strategically places itself near various local amenities, ensuring convenient access for the individuals we support. Within walking distance, supermarkets, the Sovereign shopping centre, and the vibrant All-Stars complex offer diverse options for daily needs and entertainment. This includes bowling, karaoke, and a coffee area. Moreover, easy access to a local cinema and the Hutton Moore sports centre with its swimming pool enriches the leisure options available.

The scenic Grand Pier, positioned along the seafront, becomes a hub for numerous local activities and year-round events, fostering avenues for community engagement and entertainment.





# Ethos & Values

Accomplish's Ashcombe Court service is part of the Keys Group, a family of care and support providers, including Accomplish, Keys, and Peak, who share a common goal of delivering the best outcomes for those who choose our care.

At Ashcombe Court we embody the EPIC values of Excellence, Passion, Integrity, and Caring.

Our commitment to **excellence** drives us to achieve the highest standards of learning, development, and performance in all that we do.

Our **passion** for delivering the best outcomes for those in our care is evident in our ambitious and committed approach to care and support.

Our **integrity** and transparency in our work is reflected in our honest and transparent communication and sharing of results and learnings.

Our **caring** approach is centred on showing compassion and empathy, placing those in our care at the centre of all that we do, and always putting the people we support at the heart of all our actions.



# Good News

At Ashcombe Court, we prioritise capturing the fun and engaging activities in which the people we support actively participate. From tie-dye T-shirt decorating to creating personalised plant pots for their sunflowers, we ensure a diverse range of experiences. Our theme nights transport everyone to different parts of the world, indulging in international cuisines and immersive activities. For instance, we've celebrated a vibrant Indian night adorned with flowers, where both the home and staff adorned colourful saris, and a Hungarian-themed night that included an enjoyable plastic axe throwing activity.

In addition, we've encouraged individuals to showcase their culinary skills through our own version of 'Come Dine with Me.' Participants planned and prepared three-course meals within a budget, receiving marks akin to the popular TV show, with a well-deserved voucher for the winner.

Furthermore, we believe in enabling short breaks for our people, allowing them to explore places like Liverpool, Weymouth, and Blackpool, with more exciting holiday plans in the pipeline. We take pride in supporting individuals to pursue their interests, such as one person who connected with the Salvation Army and secured a voluntary gardening role at Grove Park.

## CQC Rating

Inspected and rated

Good





## Summary & Contact Details

If someone you are supporting could benefit from joining us at Ashcombe Court we invite you to contact us today.

17 Milton Rd,  
Weston-super-Mare,  
Somerset, BS23 2SJ  
what3words: ///begin.  
closer.banana

8 Bedrooms (all ensuite)  
18 - 65 years old  
Mixed Gender Service

### Contact:

01934 626408 (home)

0121 728 7800 (office)

Find out further details or to send us a support referral:  
**[referrals@accomplish-group.co.uk](mailto:referrals@accomplish-group.co.uk)**