

# Birchwood House

27-29 Cateswell Road,  
Hall Green, Birmingham,  
B28 8NB



[accomplish-group.co.uk](http://accomplish-group.co.uk)  
0121 728 7800

**accomplish.**  
make every day amazing

# About Us

Birchwood House is a specialist service providing support to people living with mental health conditions, such as personality disorder, bipolar disorder, an anxiety disorder, schizophrenia, depression, mood affective disorder, self-harm behaviour, substance misuse backgrounds, etc.

At Birchwood House we are committed to support eight people with Mental Health needs by providing professional and personalised care to meet the unique needs of each person we support.

## Our Approach to Support

Birchwood House prides itself for the experienced and well-trained staff team, which are passionate about the work they do and strive to achieve the best possible outcomes for those that we support every day. We have mutual respect between staff and people being supported and value each person's individual recovery journey and actively practice inclusion in all that we do. Our commitment to quality is shown in everything we do and every decision we make.

We understand that everyone is an individual and their needs may vary, but whatever the person's situation or however complex their needs are, we will encourage, support, and motivate them to achieve their optimum level of independence and adapt our support to suit each person's individual needs. We enable people to make choices about how they live their lives and help them to develop their own set of resources to self-manage and stay well whilst living happy and fulfilled lives.

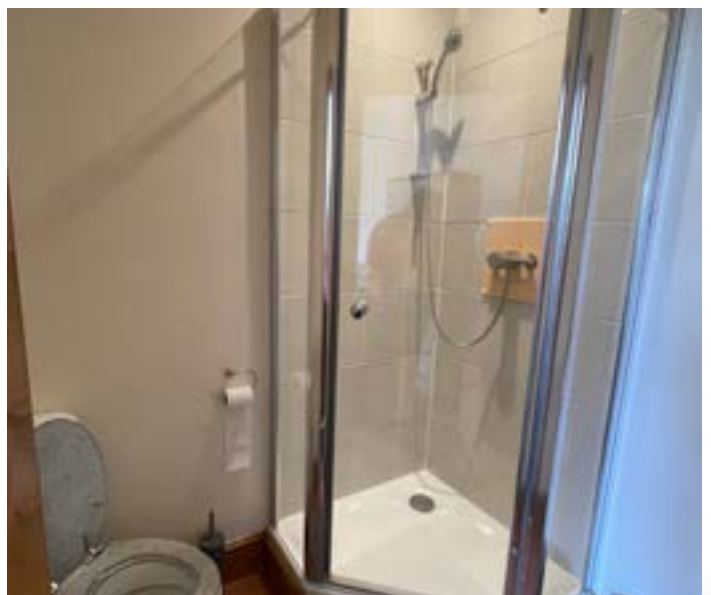
## Progressive Pathway

At Birchwood House we focus on person-centred care and encourage the people we support to develop their existing skills, strengths and resilience. We provide useful and educational materials to optimise individuals' personal development, hold regular one-to-ones and monthly reviews to ensure that we are providing the best support possible and to enable people we support to progress in any path they choose.

Our focus is on recovery and we work closely with individuals, their family, circle of support, and other professionals to define goals and work together to achieve them.

The environment is set up to enable maximum personal growth and development for the people we support and enable them to build their confidence in independent living. Our semi-independent accommodation provisions are a tried and proven practice that allows those we support to take their first steps into greater independence within a safe and well maintained environment.

# Accommodation



Birchwood House is a three-story detached property offering comfortable living spaces and essential amenities for the people we support. The property features two bedrooms with en-suite facilities and six studio flats. Each flat is equipped with a fitted kitchen and en-suite shower and toilet and comes furnished with essential items. There is a communal laundry, open-plan lounge and kitchen/dining area, as well as activity room at the rear of the house. The property boasts an enclosed rear garden and private parking.



## Location

The service is situated in the suburban neighborhood of Hall Green, in Birmingham. Our location benefits from excellent transportation links, including the nearby Hall Green train station, which is within walking distance. Additionally, there are bus routes that connect to Birmingham City Centre, Solihull, Shirley, and Acocks Green. Alongside the numerous methods of local transport, a range of local shops are nearby, such as Tesco Express, Greggs, KFC, Pound Stretcher, and many more. Essential amenities, including a health centre and post office, are also within reach.

For recreation, The Fox Hollies Leisure Centre is nearby, providing a variety of activities. Local parks are easily accessible, offering opportunities for outdoor enjoyment and relaxation.

## Positive Outcomes

John, a person supported at Birchwood House, adores painting, finding solace and joy in his artwork. Birchwood House has wholeheartedly supported his passion by creating his own art studio in a garden shed. Here, John spends hours immersed in his craft, proudly showcasing his creations to the team, family, and visitors. This embodies Birchwood's commitment to prioritising people's passions, providing a nurturing environment where individuals like John can thrive and pursue what they love most.

During a conversation with one of the people we support regarding positive outcomes and their overall thoughts and feelings about the service, they expressed high praise for Birchwood House. They highlighted that the home is consistently well maintained and kept clean, providing a comfortable living environment. Additionally, they commended the staff team for their kindness, positive attitude, and dedication to maintaining a supportive atmosphere. They acknowledged the hard work of the staff and emphasised the positive impact it has on their daily experience.

In terms of their support, the person conveyed that they feel the care provided at Birchwood House is brilliant. They noted that the staff team demonstrates a strong commitment to catering towards their individual needs, adapting support as necessary on a day-to-day basis. This personalised approach to care was particularly appreciated and contributed to their positive experience at the service.



## Summary & Contact Details

If someone you are supporting could benefit from joining us at Birchwood House, we invite you to contact us today.

Birchwood House  
27-29 Cateswell Road,  
Hall Green,  
Birmingham,  
B28 8NB

8 Ensuite Bedrooms  
18 - 65 years old  
Mixed Gender Service  
what3words: ///panels.  
dare.walks

0121 777 1347 (service)  
0121 728 7800 (office)

Find out further details or to send us  
a support referral: [referrals@accomplish-group.co.uk](mailto:referrals@accomplish-group.co.uk)

Copyright © 2023 Accomplish Group Ltd (2147328)  
Maybrook House, Second Floor, Queensway, Halesowen, B63 4AH